

Helmet Headset Installation

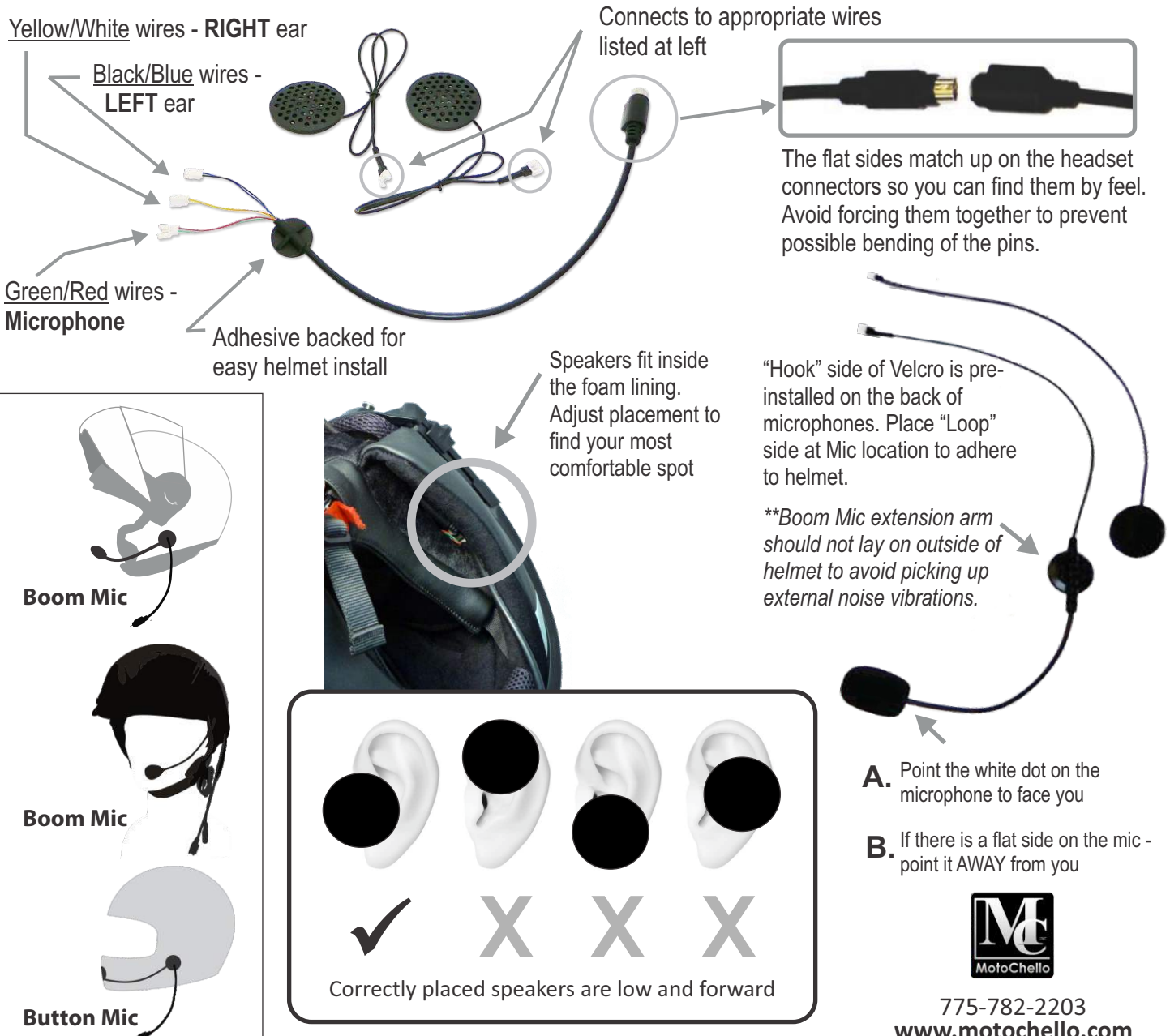
General Guide for MotoChello Headset Installation

MotoChello uses 40mm speakers with foam covers and industrial strength Velcro® for placement. The loop side adheres Speakers to the inside of your helmets outer shell. You may adjust them as needed to fine tune their placement.

For best results and comfort, the headset speakers should be placed towards the lower front of the ear (in front of the ear canal) and not against the top or back of the earlobe. Pressure in these areas can become uncomfortable over time. Having the speakers properly placed will also reduce wind, a bonus.



WARNING: Do not cut, drill or modify your helmet in any way for safety reasons. Doing so may also void your helmets warranty and reduce its effectiveness.



With the vast variety of helmets available, it is impossible to cover detailed installation for all of them. Should you need help installing your headset, please contact MotoChello support for assistance.