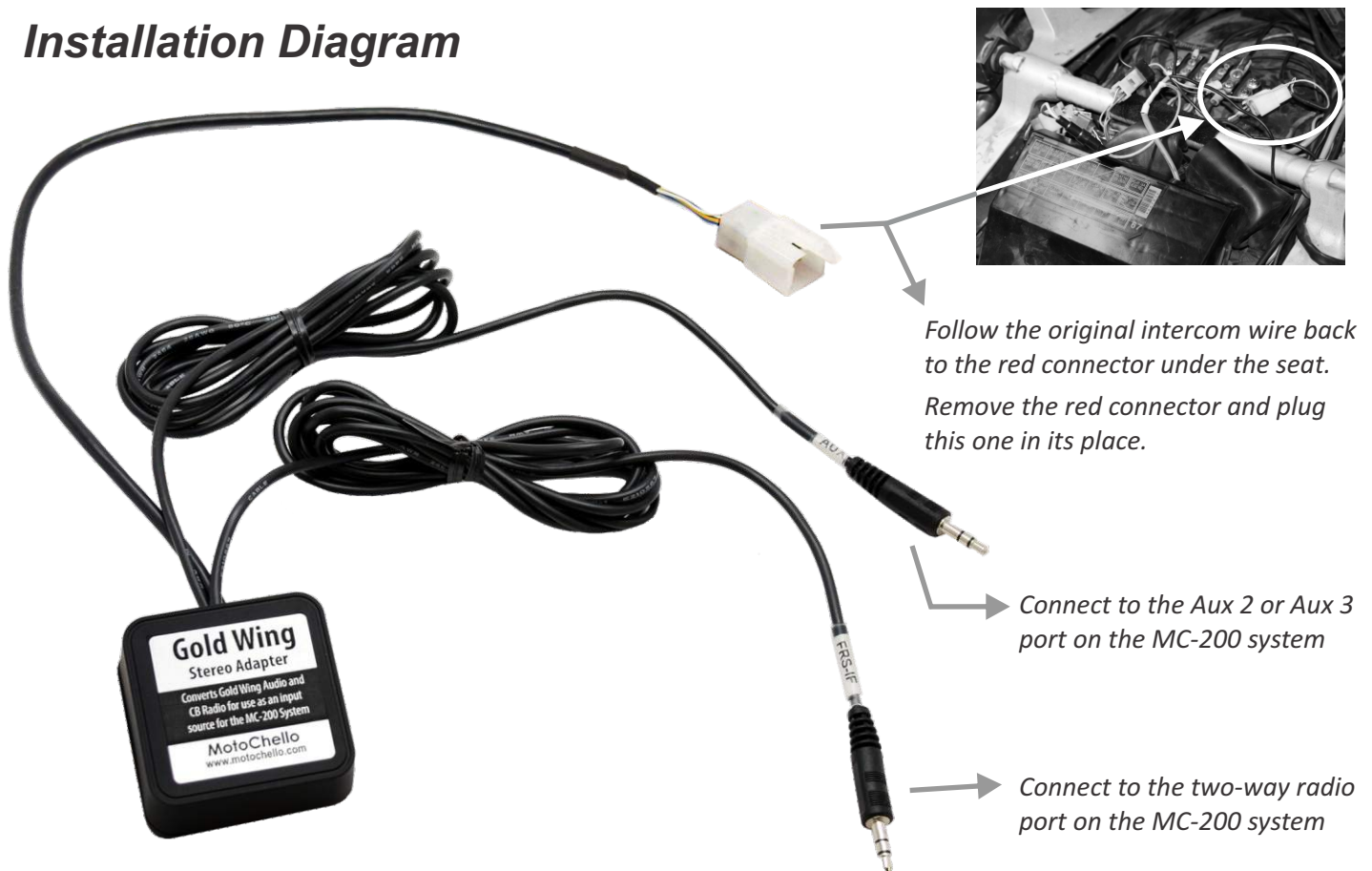


# Gold Wing Stereo Interface

## For the MotoChello MC-200 Motorcycle Audio Systems

Accesses your Gold Wing audio system and devices (including the CB radio) to use them as a source input into the MotoChello MC-200 audio system.

### Installation Diagram



- ◆ **IMPORTANT:** After connecting the GW-Interface to the MC-200 system, turn OFF the intercom on your Gold Wing. The MC-200 system has a more advanced intercom built in with voice activated microphones that turn off when you are not using them and wind reducing processors. There is no benefit to trying to use both intercoms at the same time and doing so will interfere with the MC-200.
- ◆ Once connected, the Gold Wing Stereo Interface allows you to use the Wings CB radio via its CB activation button, and a second radio with the PTT (Push-To-Talk) button supplied with the MC-200 and connected to a second two-way radio of choice.
- ◆ To listen to your Wings audio components, turn on the aux port that you have it connected to on the MC-200



MotoChello, Inc. • Gardnerville, NV • 775 / 782-2203

[www.motochello.com](http://www.motochello.com)

©2016 MotoChello, Inc.